

## PC Ltd acquires Barley House

Hampshire based, Parsons Construction Ltd (PC Ltd), has purchased Barley House, Duncan Road, Park Gate, Southampton. The property is a two storey modern office building currently occupied by two local companies. PC Ltd intends to redevelop part of the site providing 10,000 sq.ft. of new accommodation. Work commences in April 2006 with project duration of 6 months. PC Ltd, in conjunction with the appointed agent Primmer Olds, is looking to lease the new accommodation immediately. Please contact Duane M. Walker at Primmer Olds on 023 8022 2292 for further information.

*Deal secured - Mark Parsons of PC Developments with Duane Walker of Primmerolds at the Barley House development site*



Welcome to the Spring Parsons Group Newsletter. It has certainly been a busy start to the year which is excellent news for all members of the Group.

The Rockbourne team has been hard at work launching the Old Post Office development which has proved a real success in the local community. On the opening day itself we were delighted with a reservation and we were inundated with enquiries.

Both PC Flooring and PC Services have been generating more business and both have exciting projects coming up, so watch this space...

We are always pleased to receive your news and views so get in touch at [insite@pc-group.co.uk](mailto:insite@pc-group.co.uk).

*Steve Parsons*

Exclusive feature... open up to reveal the country chic Old Post office development (pages 2 -3)

# News...

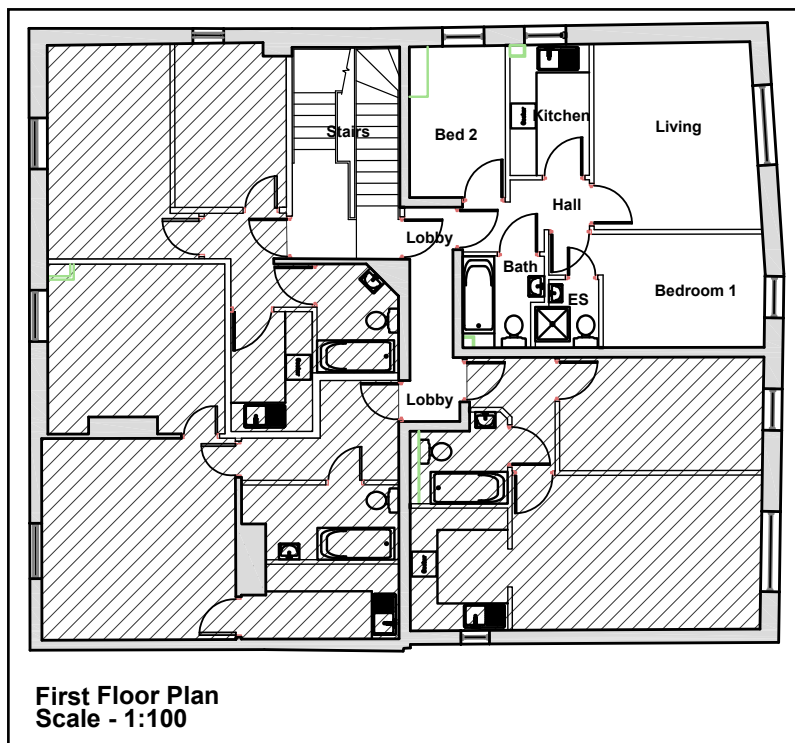
Hampshire exclusive - a look behind the doors of the Rockbourne Homes Old Post Office development...

*Mark Parsons, Director of Rockbourne Homes, gives us a guided tour of the apartments*



The Old Post Office has been a defining development for Rockbourne Homes, one certainly to launch the name into the local community. To give the apartments the exclusive feel we were after we employed Jigsaw Design to create the interiors, they have been fantastic.

**Practical living** - the living & dining area has been designed to suit modern day living needs



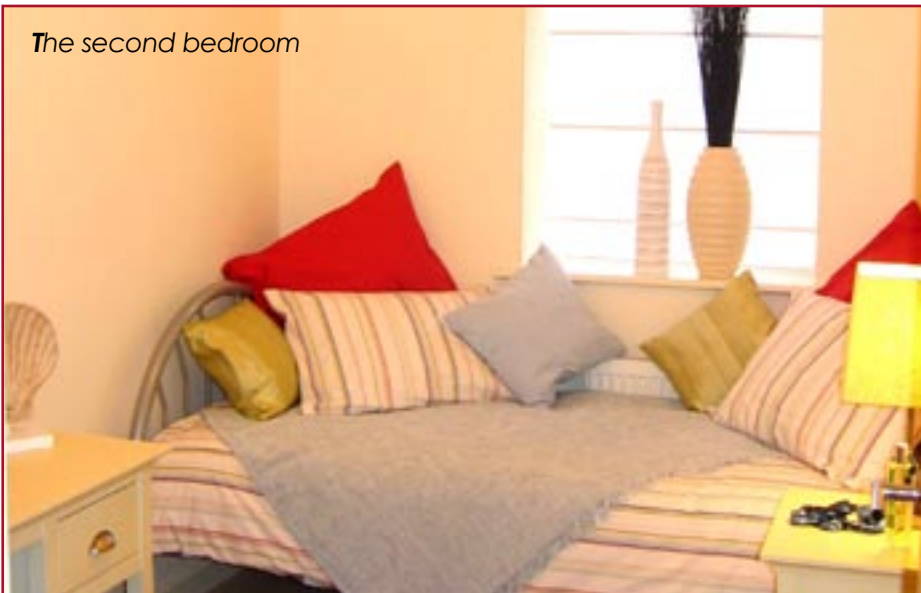
**A little bit of luxury** - the master bedroom exudes glamour with the Laura Ashley wallpaper





The fixtures and fittings used in the flat are all of the highest quality. The kitchens each have integrated appliances including stainless steel electric fan assisted oven, four ring gas hob and filter hood, washer/dryer and refrigerator. They also feature soft closing doors and granite effect worktops. The ensuite and family bathrooms alike all come fully tiled with ceramic wall tiles and natural stone effect floor tiles. They have been fitted with 'Ideal Standard' white suites and stylish bathroom furniture in warm pearwood.

The apartments are on sale now, for more information call 01489 894332



## PCS New Contract Secured

- Parsons Construction Services Ltd (PC Services), interior and exterior construction specialists, has secured the £200,000 contract with Highwood Contractors to install a tailored dry lining package in the 47 unit prestigious residential development in Bursledon, Southampton.

## About town

PC Ltd has acquired the disused Kingfisher nurseries site in Soberton. This versatile 3.46 acre site is available as a plot of land however it also has planning permission for an exceptional country house of luxury proportions. It is an opportunity not to be missed and enquiries are coming in fast.

PC Ltd is looking for other similar opportunities so do get in contact if you have land available. (Contact Mark Parsons on 01489 894332)



PC Flooring Ltd have once again achieved the ISO 9001: 2000.



The established flooring and specialist screed company was first awarded the accolade in 2003 and since then has continued to develop its quality management systems and the framework for their implementation by all team members.

Other requirements to achieve the standard include responsible management, resource management, measurement, analysis and improvement. All of which PC Flooring has successfully mastered as a company and as a team.

## PC Flooring in the press...

**Behind the cameras**

PC Flooring (Southern) Ltd has secured the contract with Leadbitter Construction to apply a specialist floor screed package at the Glebelands Residential Home for Continuing Care in the Community in Wokingham, East Berkshire. The Residential Home is unique as it is designed especially for the Cinema and Television Benevolent Fund (CTBF) "Providing Care Behind the Cameras" for those who have worked in the film and television industry. The main house is a grade 2 listed large country house built in the late Victorian era, however in total Glebelands offers accommodation consisting of six two-bedroom semi-detached houses, four one-bedroom bungalows, three one-bedroom apartments and the main house which offers single bed-sitting rooms with shared facilities for 26 individuals. PC Flooring has been contracted to prepare and install traditional floor screeds to the ground floors and on the upper floors acoustic insulation with anhydrite flowing screeds to modernise the home to bring it up to the high standards of the National Care Standards 2000 Act. The CTBF plans to develop, modernise and expand the Glebelands Estate so that they can increase the numbers of places offered to elderly residents from 26 to 100 whilst continuing to provide a range of the highest quality services including nursing care. Ian Hammond, director of PC Flooring, comments: "We are delighted to be involved in the CTBF project; it is unlike many other projects that we have worked on before. It is as close to the cameras as I will comfortably get!"





Email: [pcf@pc-group.co.uk](mailto:pcf@pc-group.co.uk) Tel: 01489 894332

The Constructor Magazine, March / April 2006 Page 42